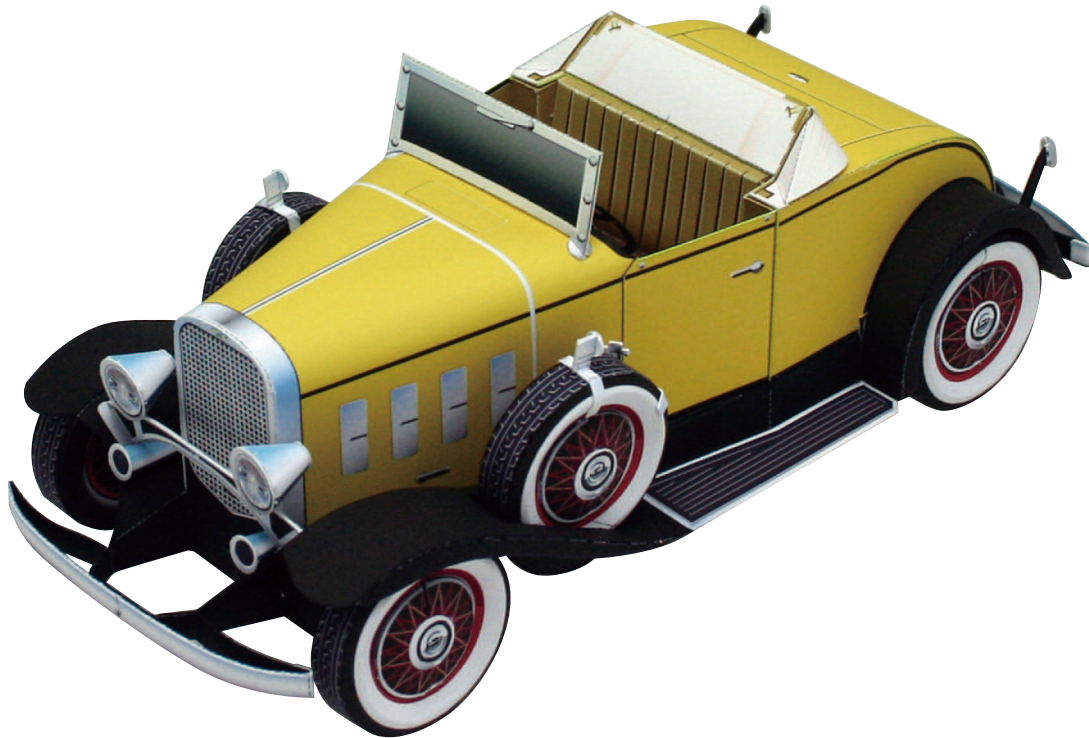


Chevrolet Confederate Deluxe Sports Roadster

Pattern

CREATIVE PARK

<http://www.canon.com/c-park/>



View of completed model * This model was designed for Papercraft and may differ from the original in some respects.

Chevrolet Confederate Deluxe Sports Roadster

1/24 scale

The Chevrolet Confederate was not only a significant model for Chevrolet, but also played a role in the history of General Motors. With the Confederate, Chevrolet, consistently lagging behind Ford in the sales wars, caught up, pulled ahead, and eventually won, transforming the competitive landscape of the auto industry. Chevrolet also became the only profitable GM division. In the 1920s, the competition between GM and Ford heated up. After Ford launched the Model A to replace the original Model T, Chevrolet responded with the introduction of a popularly priced model with a six-cylinder engine, overturning the convention of four-cylinder power plants. Both models reflected the trend toward increasingly luxurious cars, with GM opting to upgrade strategic Chevrolet models to Cadillac (luxury) class. In keeping with its 'Baby Cadillac' nickname, the Confederate was characterized by flamboyant style to rival its V16 Cadillac cousins. With a luxurious interior and an extensive range of features, its specifications also lived up to the 'Baby Cadillac' name. This sports roadster model featured a retractable 'rumble seat' to accommodate rear passengers.

Data: 3179cm³ water-cooled 6-cylinder OHV engine, producing 60HP; top speed of 113km/h

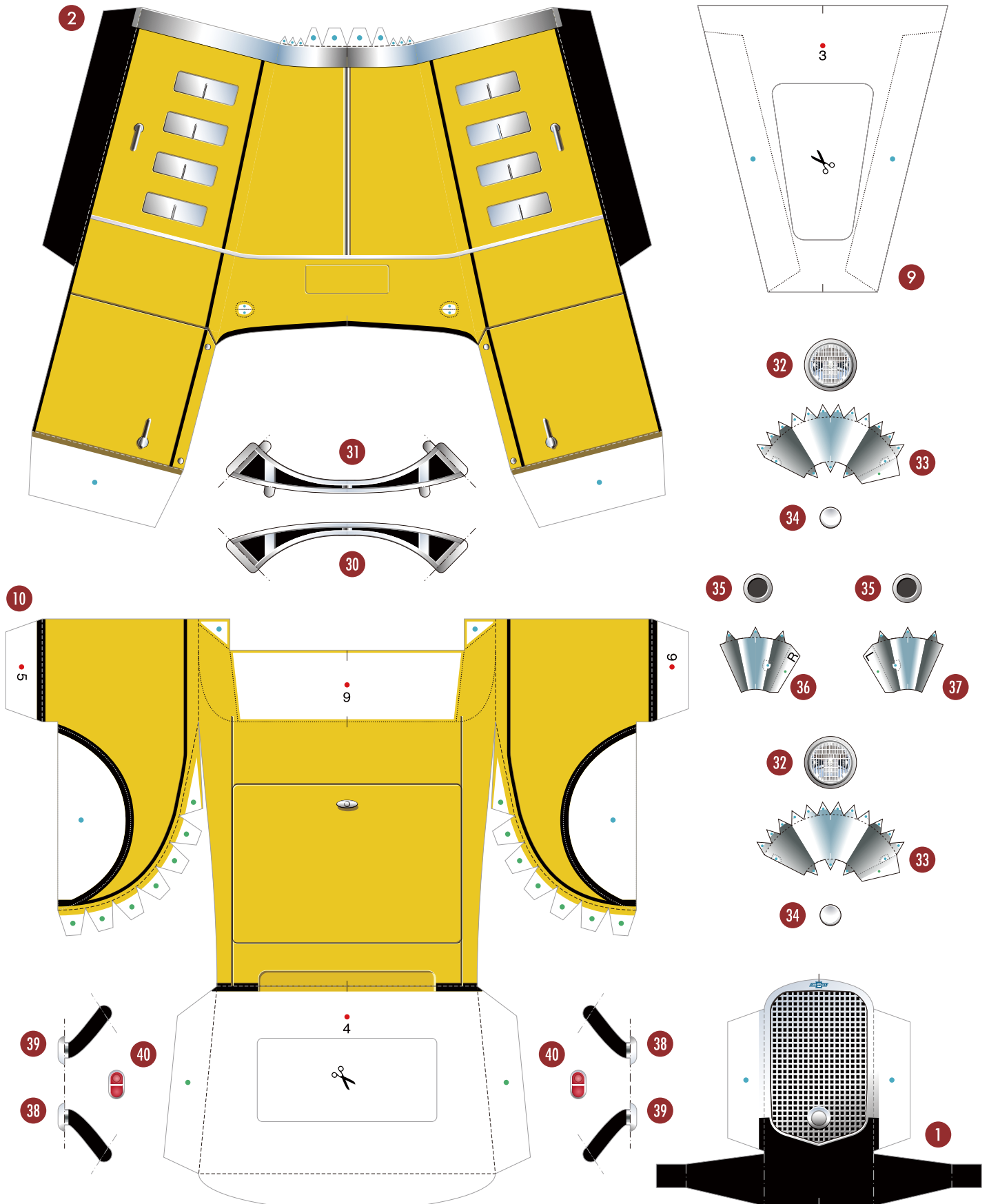
Masayoshi Oka, Japan Classic Car Association

■ Parts list (pattern) : Five A4 sheets (No. 1 to No. 5)

■ No. of Parts : 94

Build this model with careful reference to the Assembly Instructions.

* If you prefer that the rear sides of the paper parts not be white, print the two optional reverse-side printing sheets on thin paper such as standard printer paper and adhere these to the reverse sides of sheet No. 4 using spray adhesive, then build the model as described in the instructions.

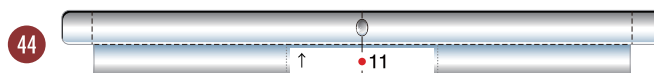
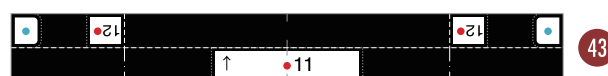
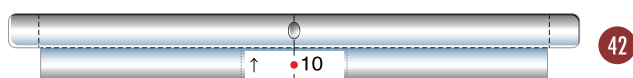
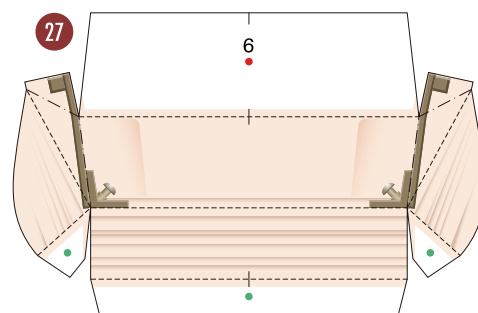
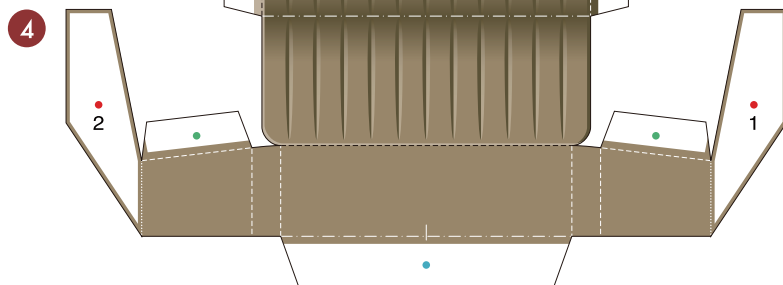
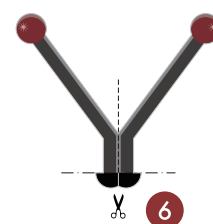
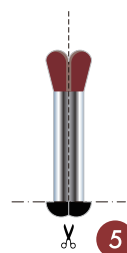
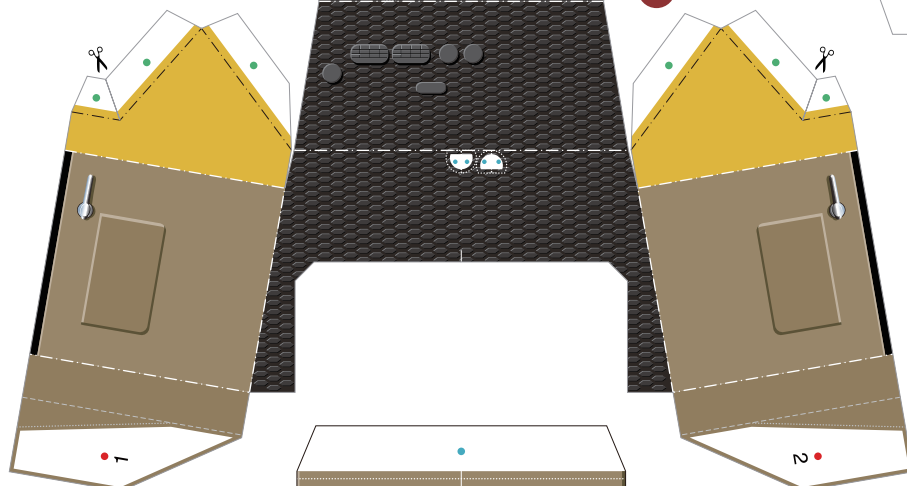
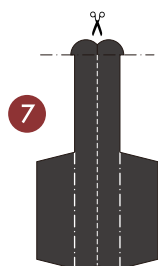
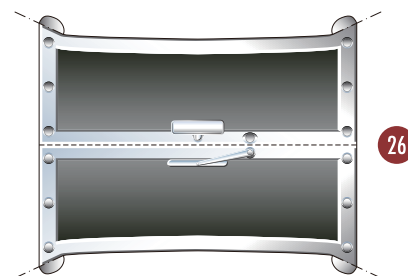
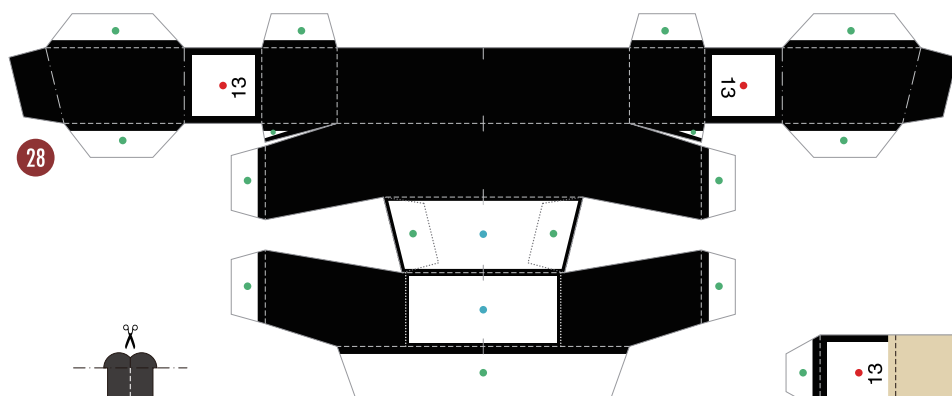


Chevrolet Confederate

Pattern

Canon

© Canon Inc. © Toshimasa Mitsutake



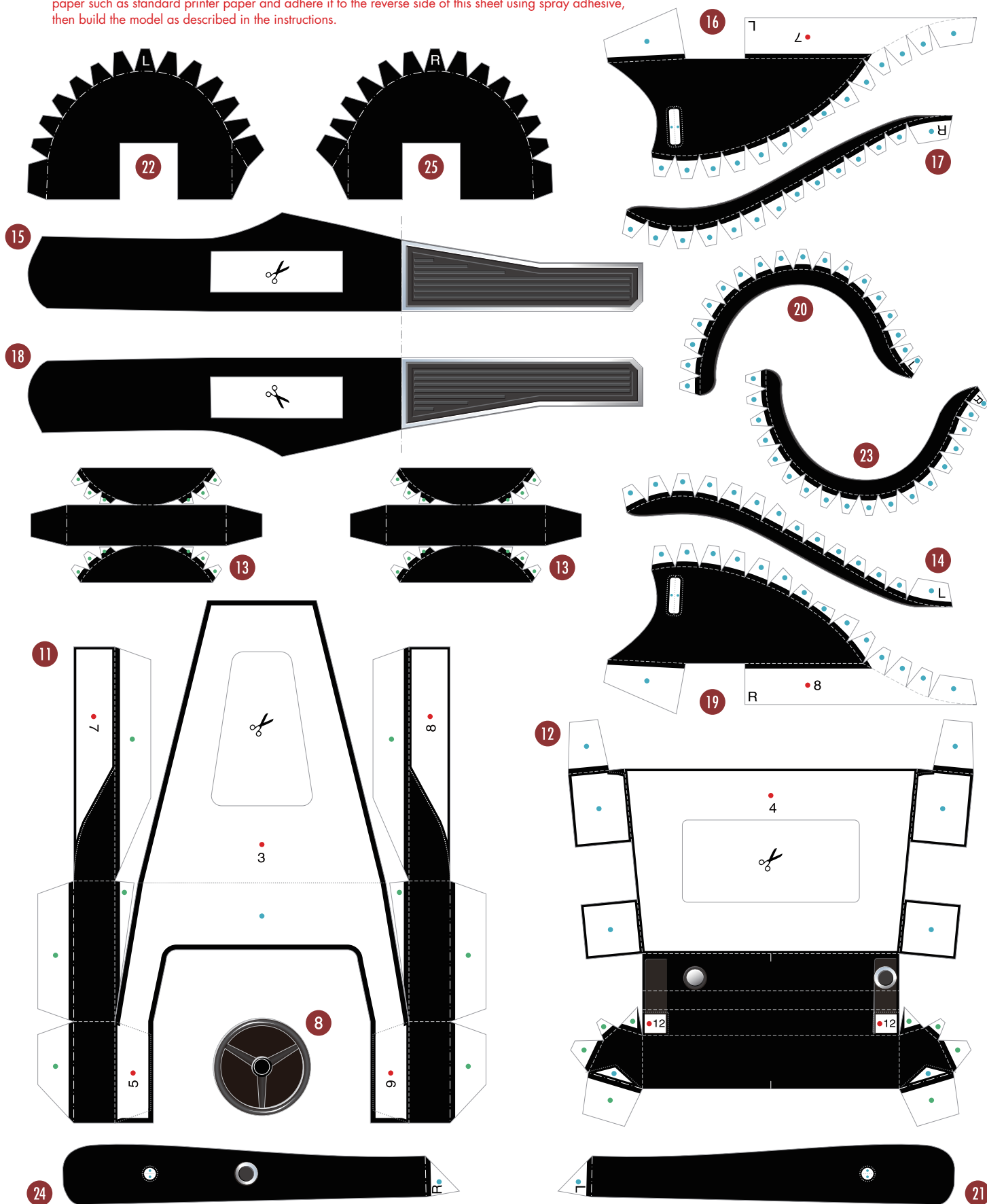
Chevrolet Confederate

Pattern

Canon

© Canon Inc. © Toshimasa Mitsutake

* If you prefer that the rear sides of the paper parts not be white, print the optional reverse-side printing sheet on thin paper such as standard printer paper and adhere it to the reverse side of this sheet using spray adhesive, then build the model as described in the instructions.



Chevrolet Confederate

Pattern

Canon

© Canon Inc. © Toshimasa Mitsutake

